

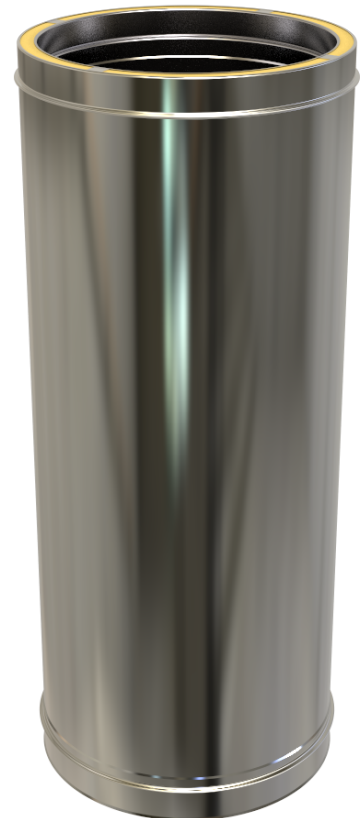


Convesa

AVANT KA-KC Ø750/800

2024-02

INSTALLATION INSTRUCTIONS



CONTENTS

1	General information	2
2	Applicable standard	2
3	Distance to combustibile materials	2
4	Jointing system	2
5	Assembly with silicone seal	3
6	Supports	4
7	Appliance adaptors	4
8	Adjustable lengths	5
9	Increasers and Reductions	5
10	Caps and Terminals	6
11	Maintenance	6
12	Chimney notice plate	6

1 General information

This chimney must be installed in accordance with all these instructions. Ensure that all chimney components are available and check them to ensure there has been no damaged before assembly. Do not use damaged or modified components.

Use appropriate personal protective equipment when carrying out the installation.

This instructions document does not consider information about chimney sizing. The diameter of the chimney should be according to the appliance manufacturer instructions and the standard EN-13384-1.

2 Applicable standard

Metal chimney system AVANT, models KA, KC and KI, is CE certified according to EN 1856-1, number 0099/CPR/A71/0037.

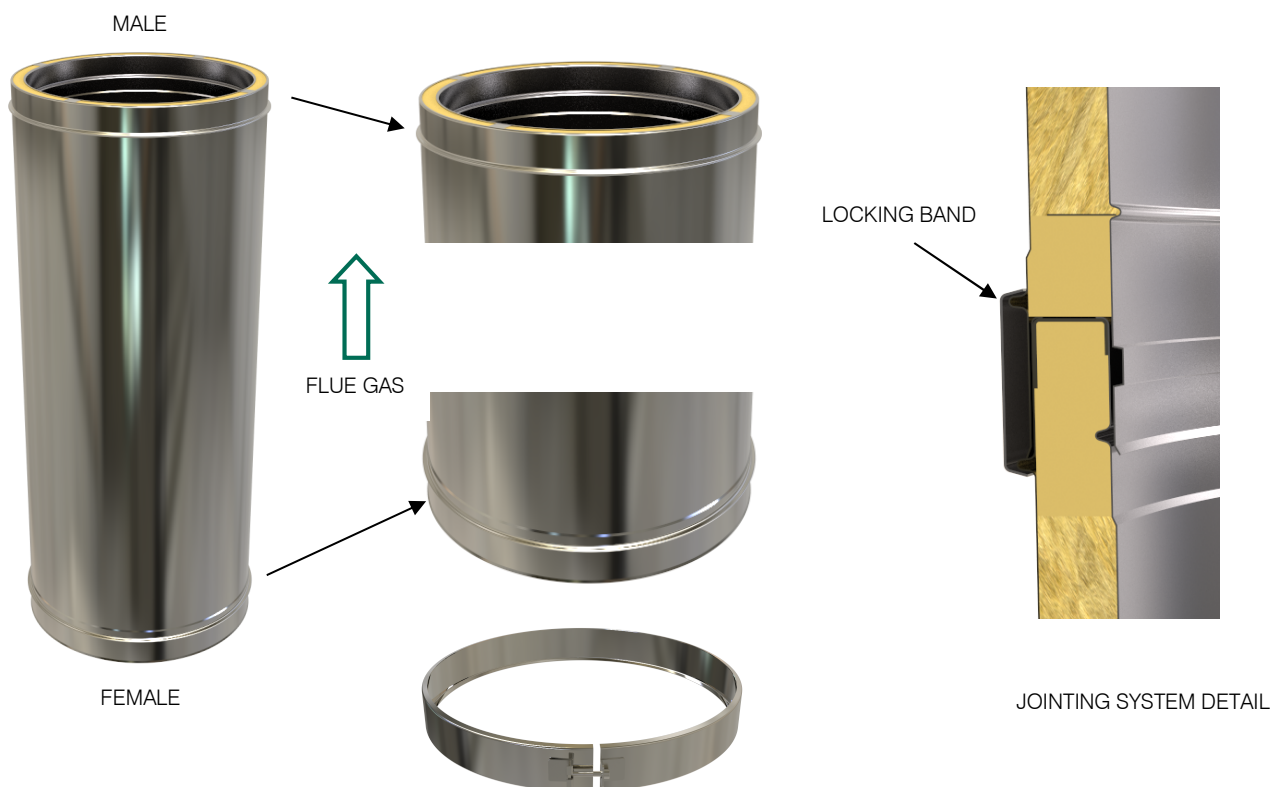
3 Distance to combustible materials

A minimum distance must be maintained between the external wall of the chimney and any combustible materials. The minimum distance depends on the internal diameter (see table below).

Internal diameter [mm]	Minimum distance [mm]
> 600	240

4 Jointing system

The assembly of all components is made with a male-female system. The male end of each component is on the top and the female end on the bottom part. See figure 1. The joint between both elements must be fixed with the locking band. The locking band is made of stainless steel and is fitted with a screwed closing system. The locking band is supplied with each component with a female end.



Figure

5 Assembly with silicone seal and silicone

The chimney should be installed with silicone seals when the flue gas outlet was through force draught (positive pressure). Each joint between chimney elements should have a silicone seal.

The seals are glued in the place for the seals to facilitate assembly.

A high resistance temperature (300 °C) **silicone cord** must be placed in the inner tube of the male end, along the entire perimeter, on the groove. It has to be a generous cord, approximately 1 cm in diameter. See figure 2 and photo 1 and 2.

The two lips of the seal must be **lubricated with soap** around the entire perimeter. See figures 2 and 3. Each component is connected with the previous one as shown in figure 4. The joint between both elements must be fixed with the locking band.

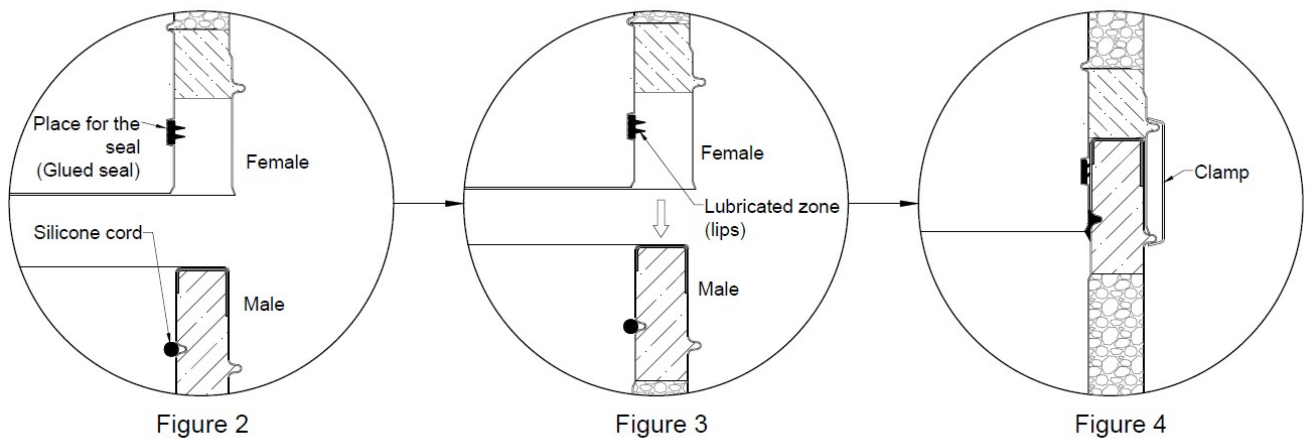


Photo 1

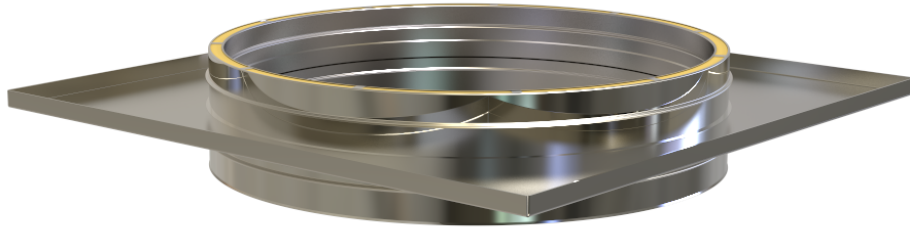


Photo 2

6 Supports

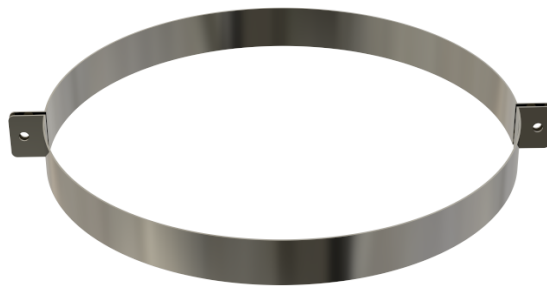
6.1 Console plate

This component is used to support the chimney. It must be assembled one console plate every 4 meters.



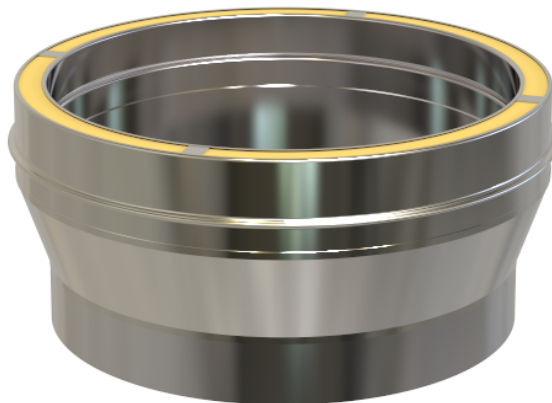
6.2 Non vertical assembly support

This component is used to support the chimney in non-vertical sections. It supports a maximum total chimney length of 2 meters.



7 Appliance adaptors

This component is used to join the chimney to the boiler. It has a simple wall that makes the connection. This side can fit inside (male) or outside (female) the boiler pipe. In condensation installations the appliance adaptor must be male to avoid condensate leaks. It is necessary to apply a properly sealant in the connection to avoid the flue gas leak.



8 Adjustable lengths

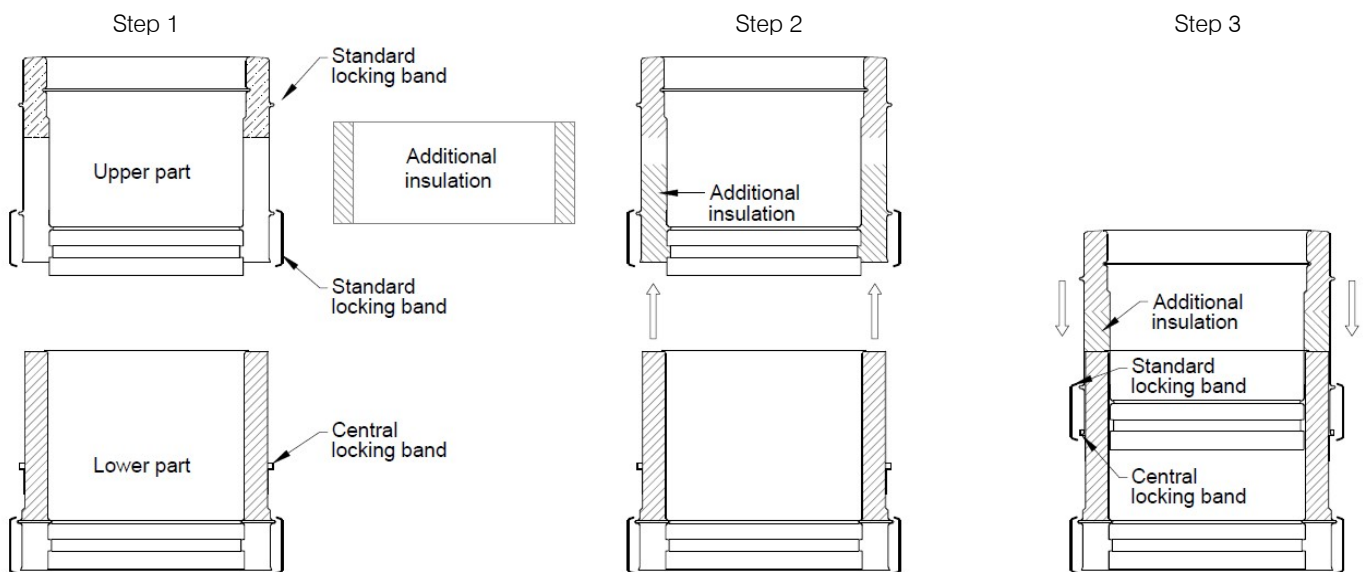
The adjustable length consists of the upper part (with the standard locking band), the lower part (with the central locking band) and the additional insulation. Next steps are necessary to obtain the length required.

ATTENTION: Anti-cut gloves must be used to minimize risk.

Cut the additional insulation with a knife to the appropriate length (effective length required - minimum length) and insert it into the upper part of the adjustable as shown in the figure of step 2.

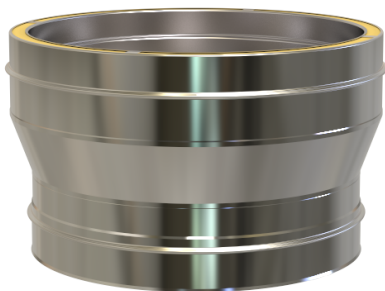
Connect the two parts of the adjustable as shown in step 3. After filling the groove of the central locking band, connect the upper part as shown in step 3. The joint between both parts has to be ensured with the standard locking band. See step 4.

Once the adjustable length is fitted, this product is assembled just like the rest of the pieces.

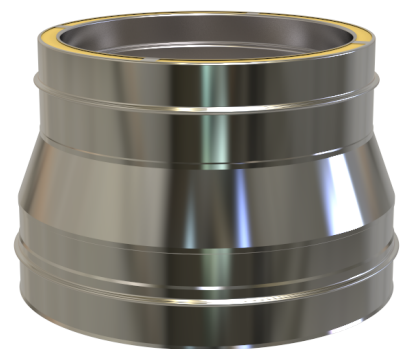


9 Increases and Reductions

These components are used to make changes in the section of the chimney. We talk about increasers when it changes de diameter to a bigger one (following the flue gas direction), in the opposite we talk about reductions. Both components are shown in the mounting position.



Increaser

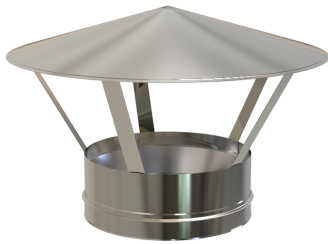


Reduction

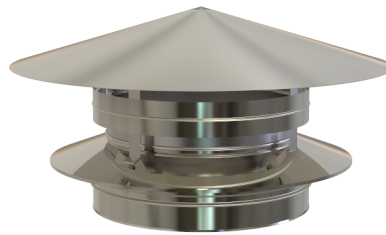
10 Caps and Terminals

These components are used to finish the chimney. Its geometry depends on the mounting orientation (vertical / horizontal) and the special function of each cap or terminal. Main types are shown below:

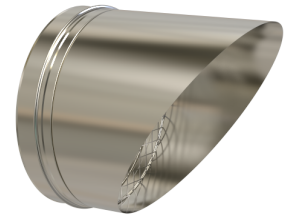
1. Standard cap. This cap offers rain protection inside the chimney. Also, can incorporate an anti-bird mesh.
2. Anti-wind cap. This cap offers and extra protection against the wind to facilitate the chimney draught.
3. Horizontal terminal. This terminal is used to finish the chimney when it ends horizontally.



1. Standard cap



2. Anti-wind cap





3. Horizontal terminal

11 Maintenance

According to local standards.

12 Chimney notice plate

The chimney notice plate should be marked up in indelible ink and securely fixed in a visible position closed to the chimney.

 Convesa	 <small>0 0 9 9</small>	
DESIGNACIÓN: <input style="width: 100%; border: none; border-bottom: 1px solid black;" type="text" value="T - - - - L - ()"/>		
DIÁMETRO (INT/EXT):		<input style="width: 100%; border: none; border-bottom: 1px solid black;" type="text" value=" / "/>
DISTANCIA AL MAT. COMBUSTIBLE:		<input style="width: 100%; border: none; border-bottom: 1px solid black;" type="text" value=""/> mm. ⇨ 
INSTALADOR: <input style="width: 100%; border: none; border-bottom: 1px solid black;" type="text"/>		
<input style="width: 100%; border: none; border-bottom: 1px solid black;" type="text"/>		
FECHA DE LA INSTALACIÓN:		<input style="width: 100%; border: none; border-bottom: 1px solid black;" type="text" value=" / / "/>